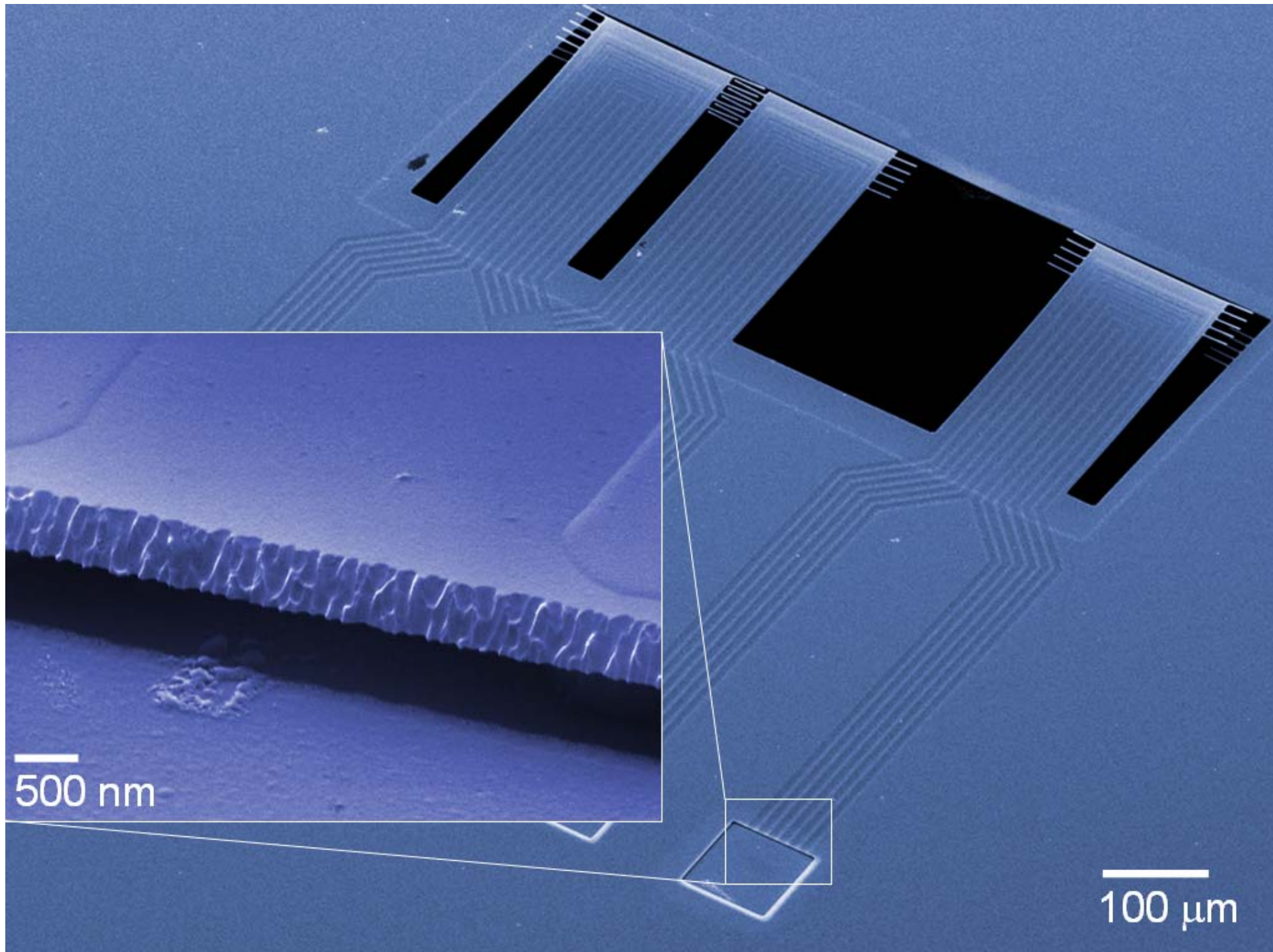


A high-magnification photograph of a microfluidic chip, showing a complex network of tiny channels and chambers. The chip is rectangular and has a light beige or tan color. The channels are etched into the surface, creating a grid-like pattern of interconnected lines. The lighting is bright, highlighting the intricate details of the microstructures.

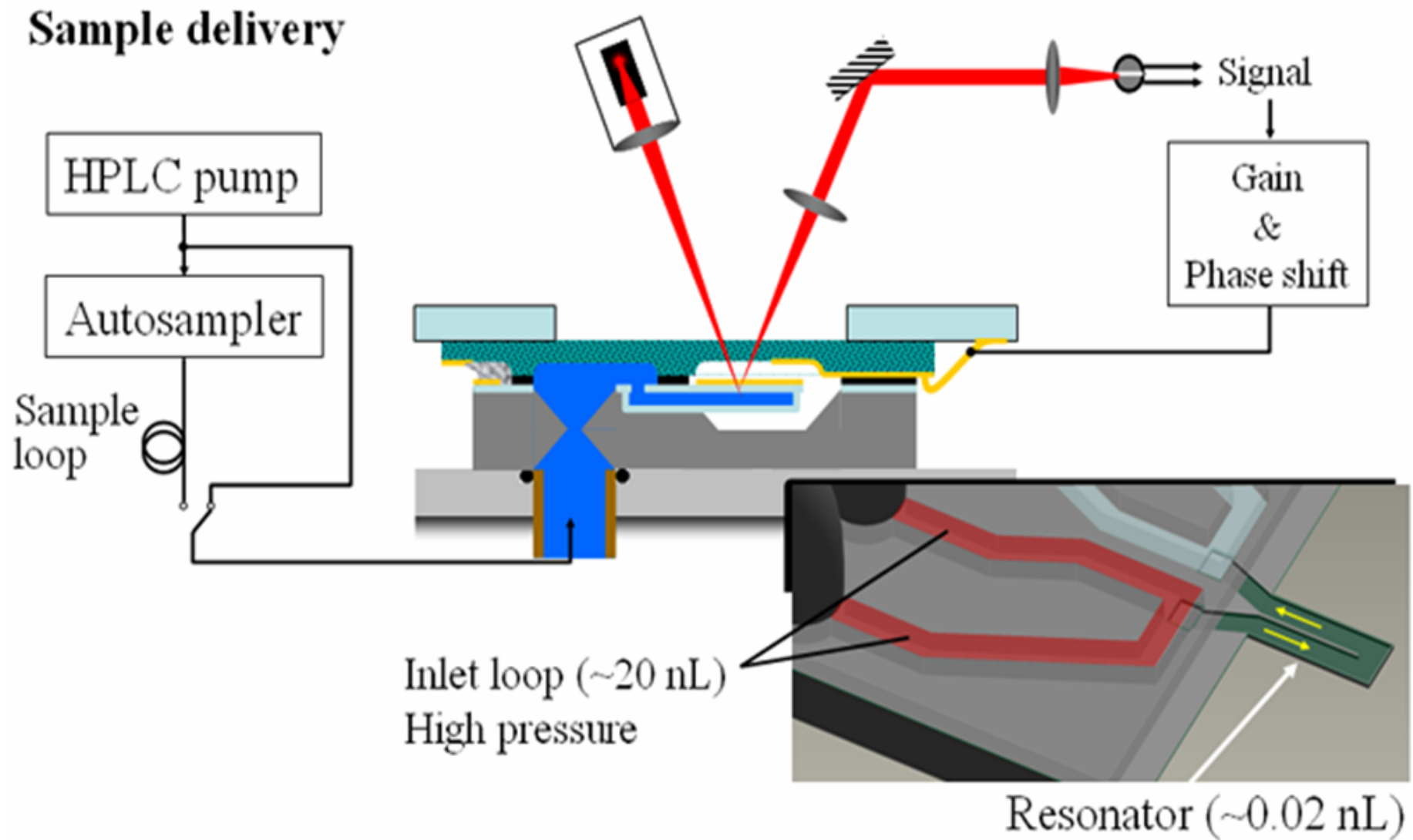
# **Microdevices for Biomolecular Detection**

**Scott Manalis**

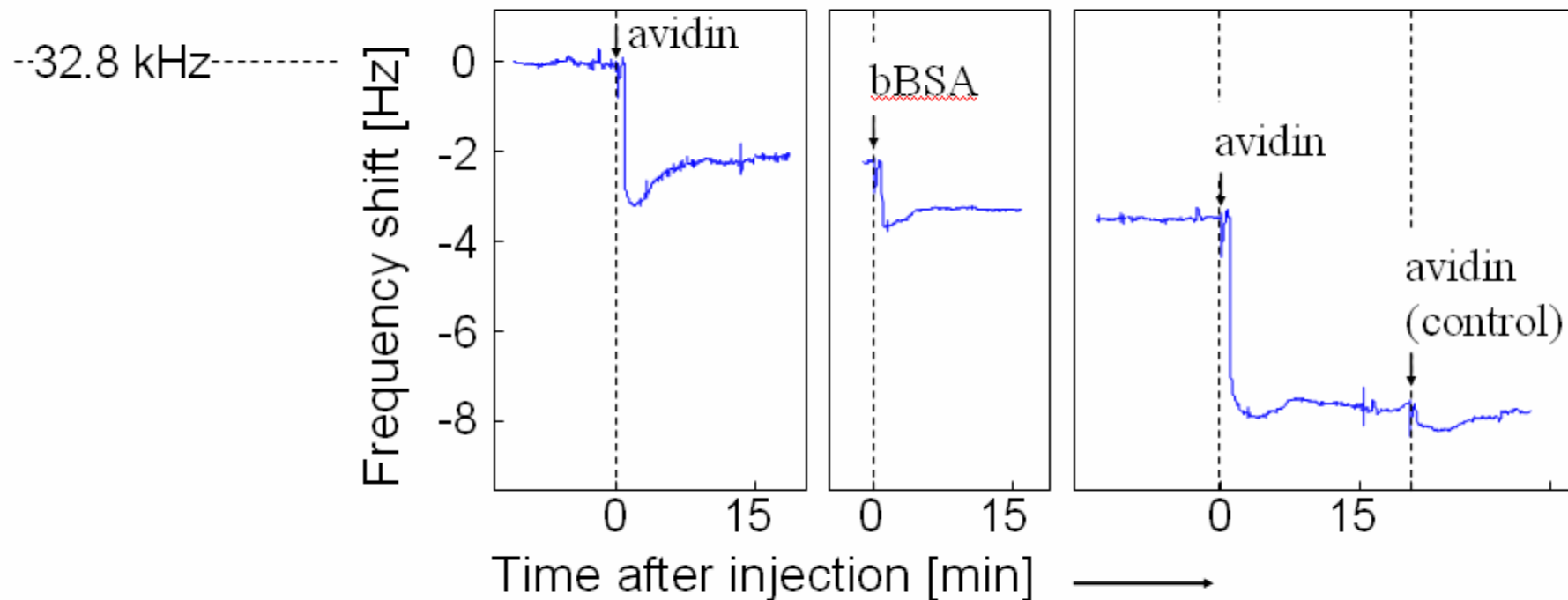
***Department of Biological and Mechanical Engineering  
Massachusetts Institute of Technology***



# Measurement Setup



# Validation of suspended microchannel resonator for biomolecular detection



 avidin  
 bBSA

