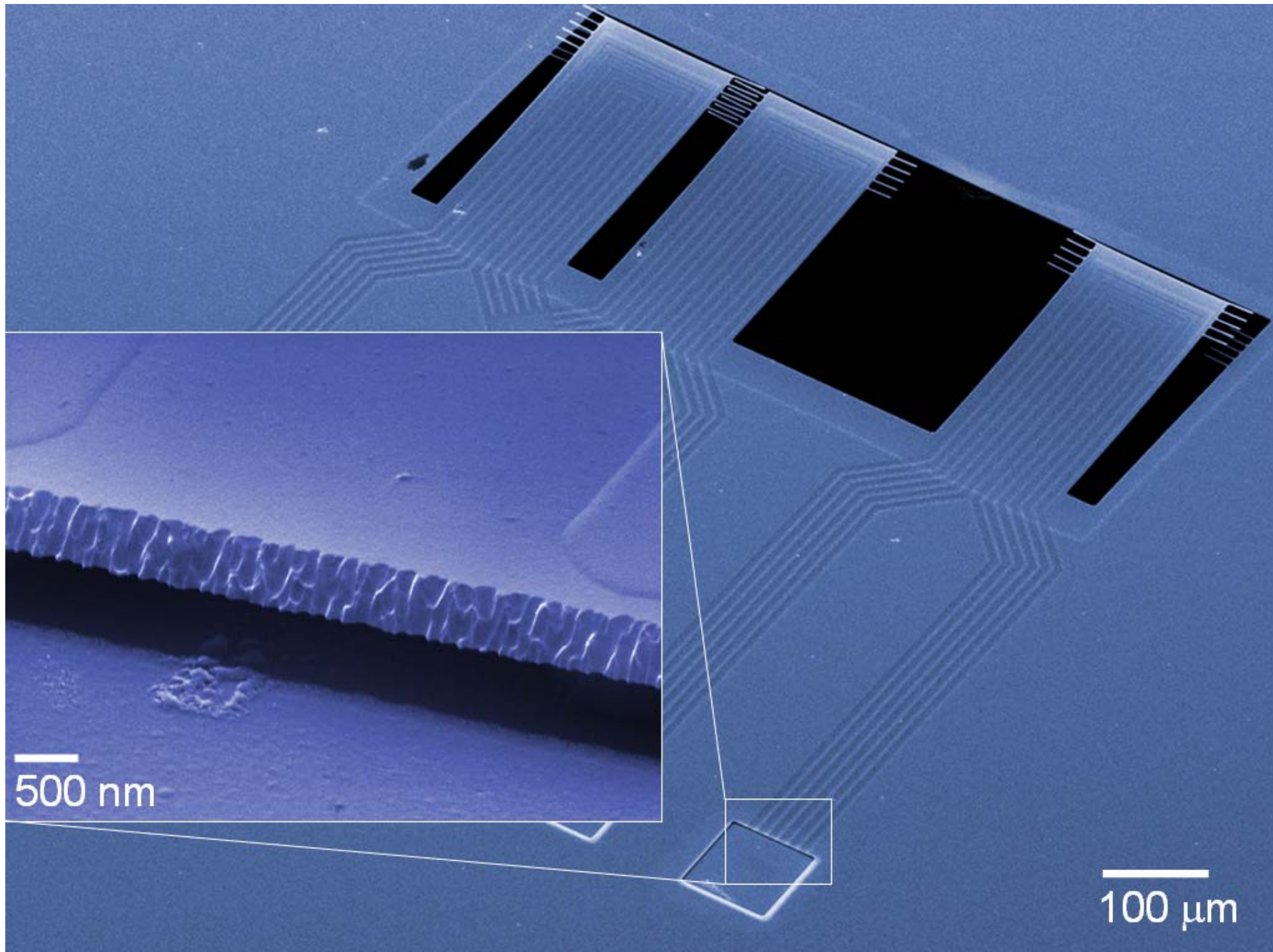


A high-magnification photograph of a microfluidic chip, showing a complex network of tiny channels and chambers. The chip is rectangular and has a light beige or tan color. The channels are etched into the surface, creating a grid-like pattern of interconnected lines. The lighting is bright, highlighting the intricate details of the microstructure.

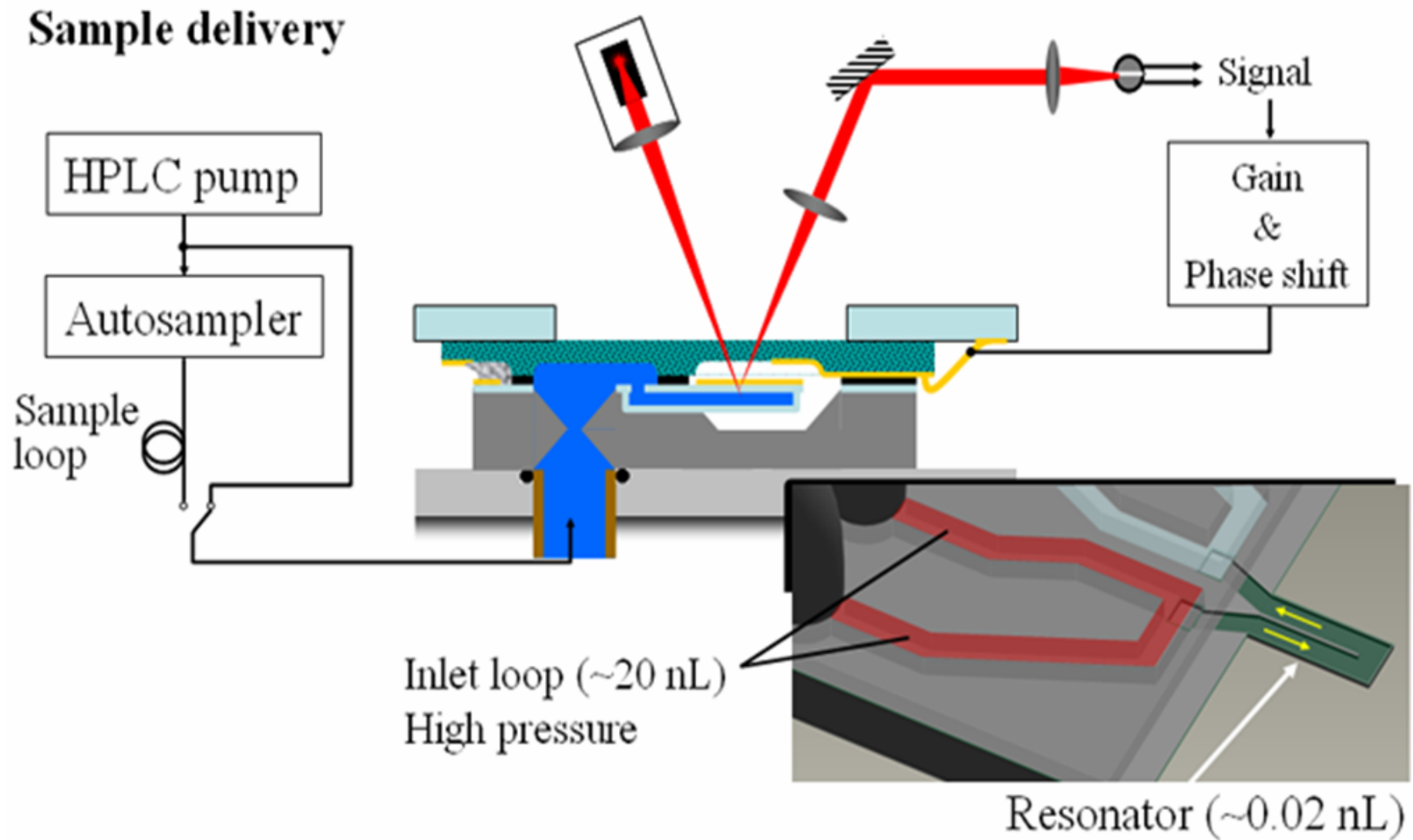
Microdevices for Biomolecular Detection

Scott Manalis

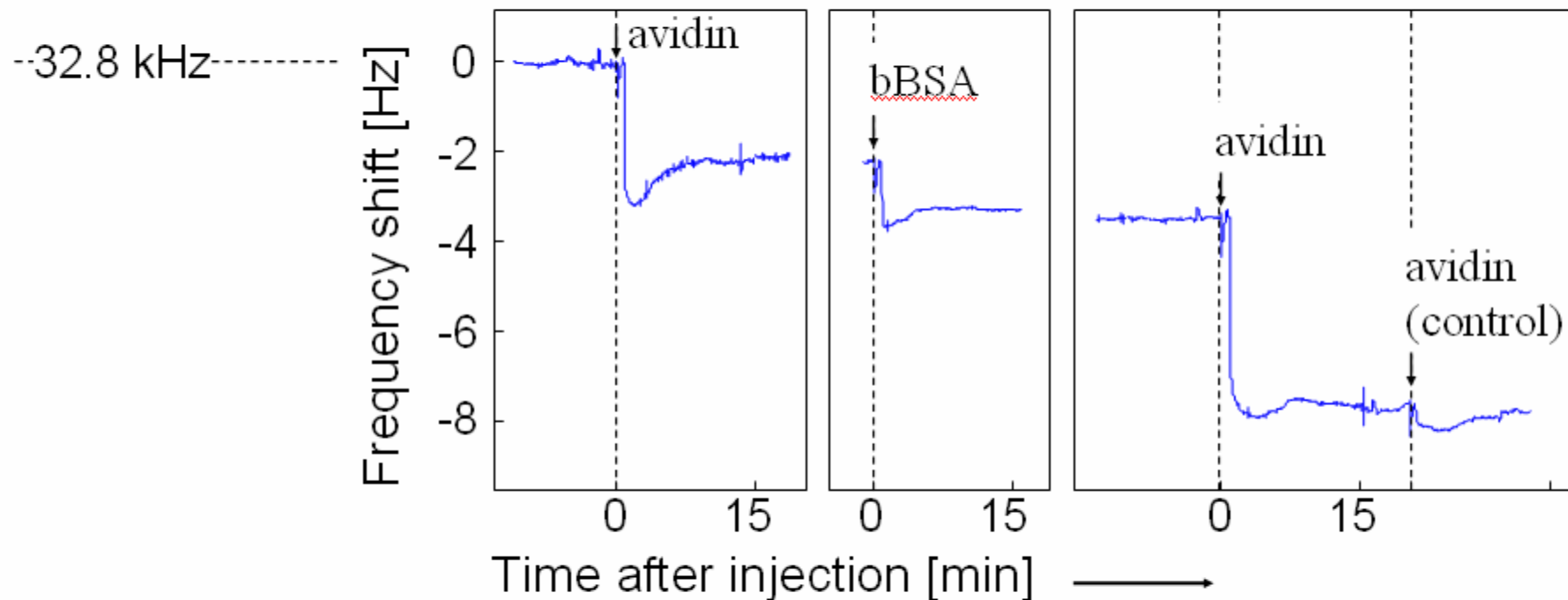
***Department of Biological and Mechanical Engineering
Massachusetts Institute of Technology***



Measurement Setup



Validation of suspended microchannel resonator for biomolecular detection



avidin
bBSA

